

CHEMISTRY THAT MATTERS™

سابک
sabic

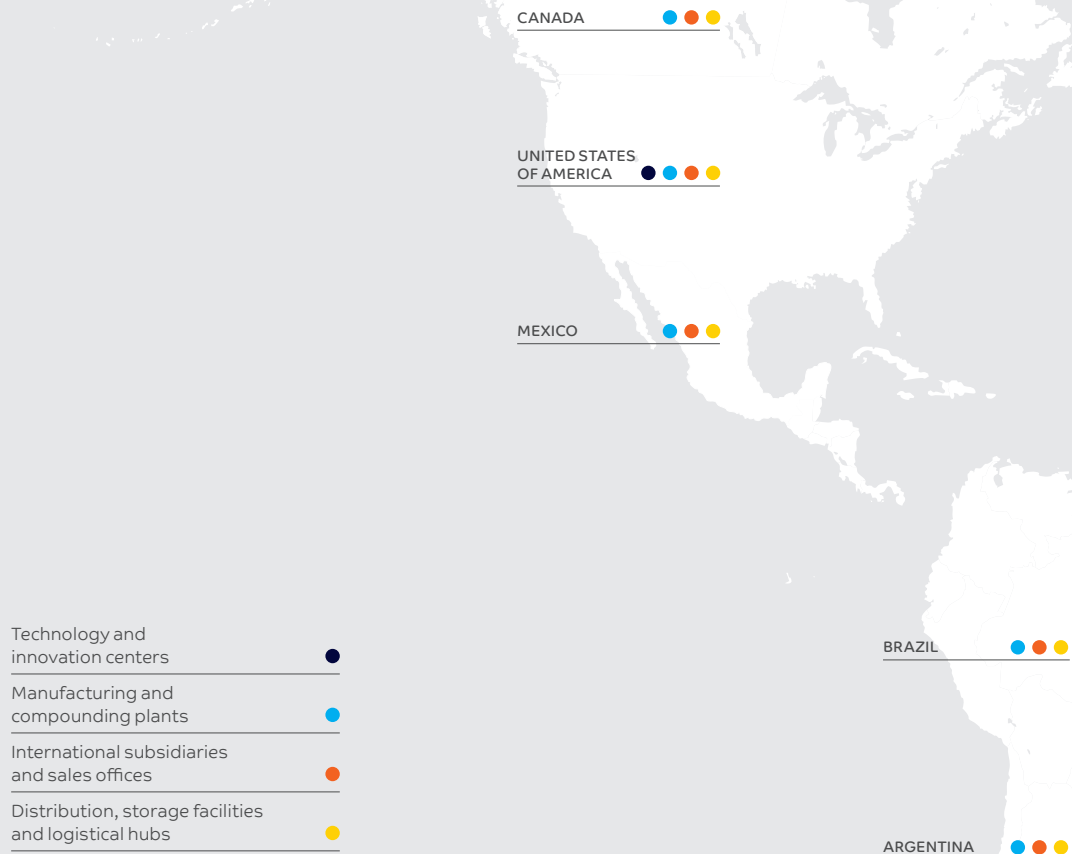
CHEMICALS

BUSINESS OVERVIEW



AT A GLANCE

SABIC, headquartered in Riyadh, Saudi Arabia, employs more than 32,000 people in around 50 countries, working together to make the building blocks of the modern world ever better, ever more efficiently, and ever more sustainably.



NET INCOME (SAR)

67 mln

ASSETS (SAR)

295 bln

SALES (SAR)

117 bln

PRODUCTION (METRIC TONS)

60.8 mln



AMERICAS
HEADQUARTERS
Houston, USA



EUROPE
HEADQUARTERS
Sittard, The Netherlands



MIDDLE EAST AND AFRICA
HEADQUARTERS (GLOBAL)
Riyadh, Saudi Arabia



ASIA
GREATER CHINA
HEADQUARTERS
Shanghai, China

REST-OF-ASIA
HEADQUARTERS
Singapore



32,000+

Employees around the world



9,946

Patent portfolio



A+/A1

One of the highest standalone credit ratings



Top 2

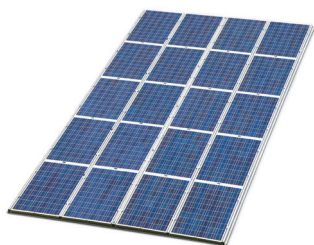
Chemical brand value

STRATEGIC INDUSTRIES WE SERVE



AGRI-NUTRIENTS

Our portfolio of high quality agri-nutrients play a vital role in helping to secure adequate global food supply and make it possible to produce more food from less land.



CLEAN ENERGY

SABIC's specialty and polymer products can help create sustainable renewable-energy solutions for the future.



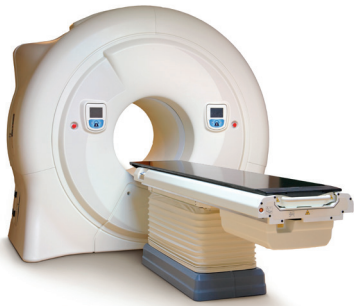
ELECTRICAL & ELECTRONICS

Manufacturers need to make products in a cost-effective manner, yet meet consumers' expectations for style, ease of use and sustainability. Our materials are the foundation for the next generation of electronic devices.



CONSTRUCTION

We provide products to architects and builders who seek solutions to satisfy public demand for environmentally responsible structures while providing design freedom.



MEDICAL DEVICES

We help customers successfully address the challenges facing the industry by providing advanced technologies, a broad product portfolio, and a healthcare policy.



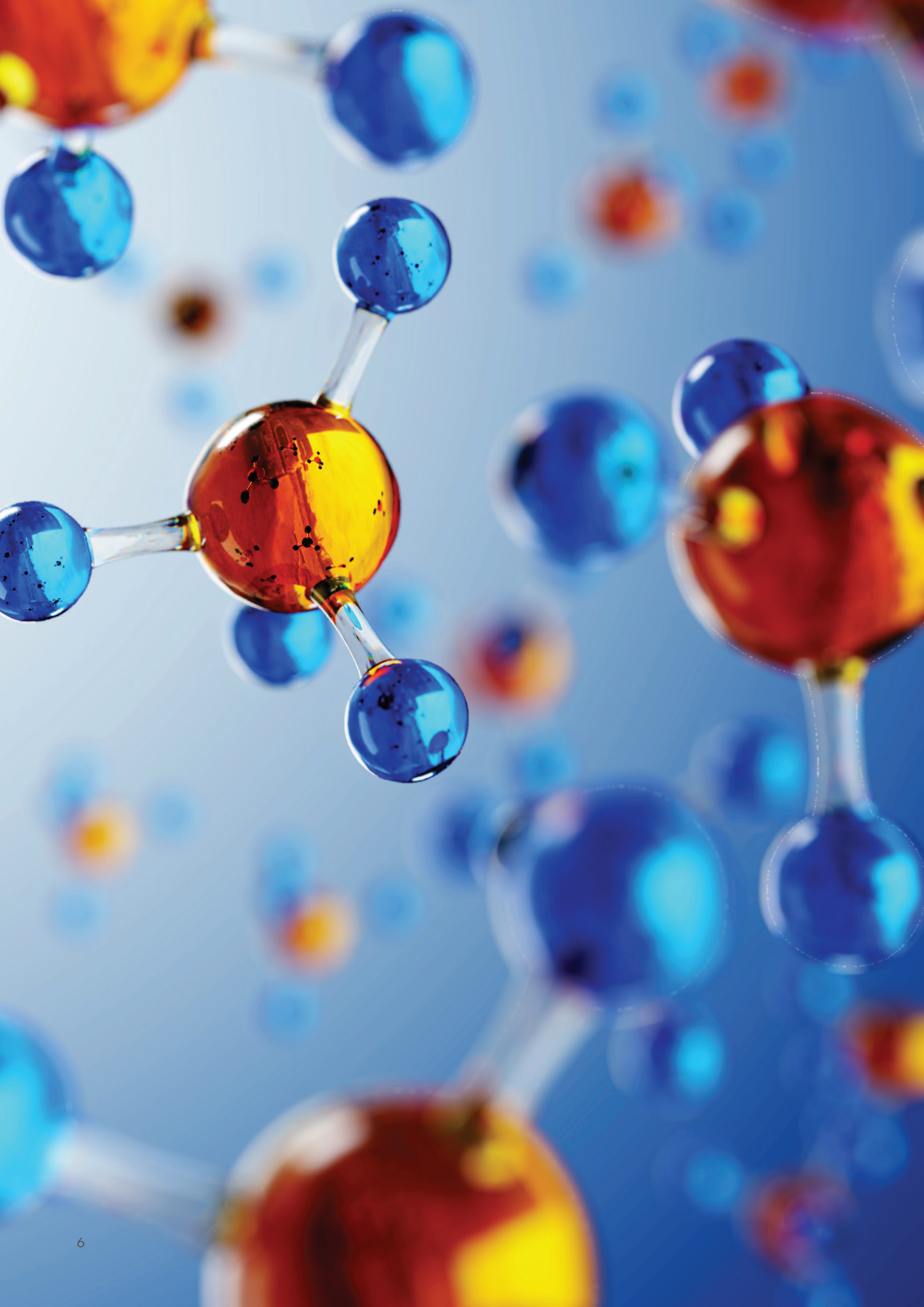
PACKAGING

SABIC polymers seek to help food and drink producers meet their goals while still providing sustainable benefits like lightweighting and environmentally-focused initiatives.



TRANSPORTATION

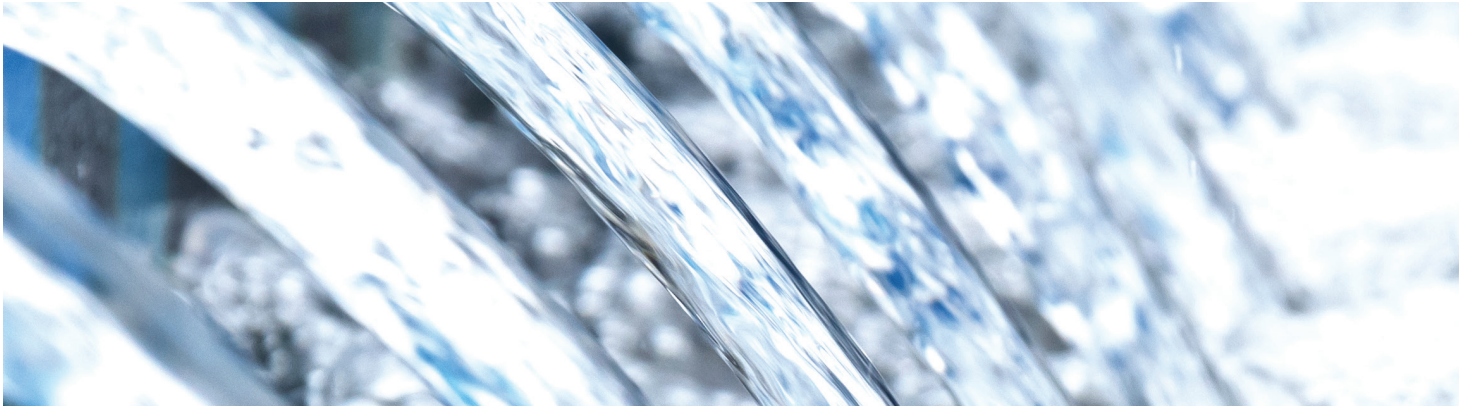
Automobiles, aircraft, rail interiors, heavy-duty trucks and other vehicles require new approaches to meet ever-rising requirements. We put our material, design and technical expertise to work to help OEMs meet this challenge and drive innovation to new levels.



CHEMICALS

SABIC's chemicals portfolio constitutes the most basic building blocks of a large variety of other chemicals and advanced materials, ultimately enabling the manufacture of a vast range of industrial and consumer goods. Thanks to our global investments in the latest technology and our ambition to be the preferred world leader in chemicals, our manufacturing plants produce a wide range of world-class products – glycols, aromatics and derivatives, olefins, and oxygenates, besides a variety of functional chemicals.

PRODUCT PORTFOLIO



CHEMICALS

OLEFINS

- Ethylene
- Propylene
- Butadiene

ETHANOLAMINES

- Monoethanolamine
- Diethanolamine
- Triethanolamine

ETHYLENEAMINE

- Ethylenediamine (EDA)
- Diethylenetriamine (DETA)
- Piperazine (PIP68)

AROMATICS

- Phenol
- Styrene Monomer
- Pygas
- Acetone
- Acetic Acid
- Paraxylene
- Purified Terephthalic Acid

GLYCOLS

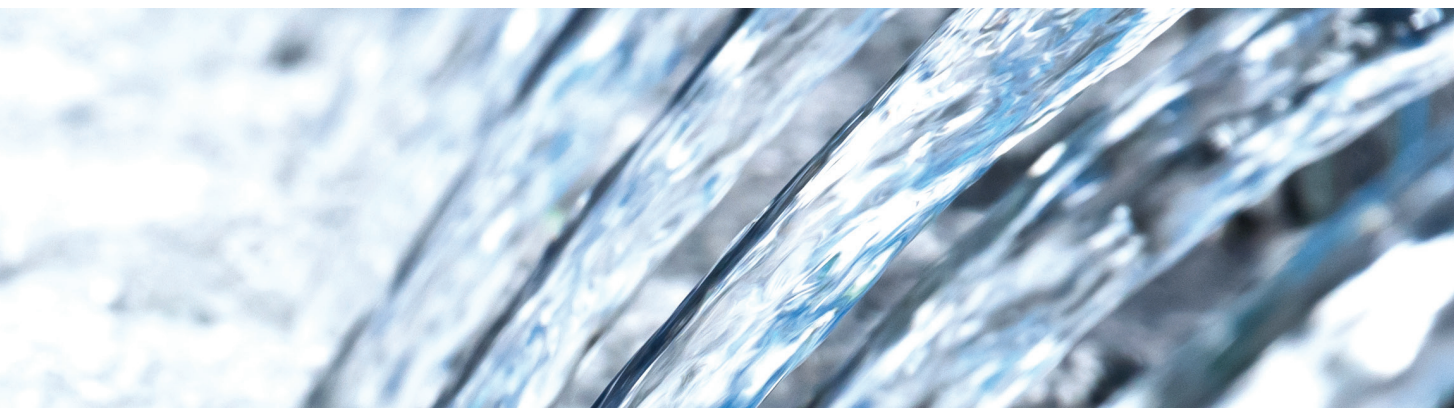
- Monoethylene Glycol
- Diethylene Glycol
- Triethylene Glycol

CHLOR-ALKALI

- Ethylene Dichloride
- Caustic Soda

OXO ALCOHOLS & PERFORMANCE MONOMERS

- 2-Ethylhexanol
- Iso-butyraldehyde
- N-butanol
- Iso-butanol
- Dioctyl Phthalate
- Methyl Methacrylate



LINEAR ALPHA OLEFINS

- Butene-1
- Hexene-1 (C6)
- Octene-1 (C8)
- Decene-1 (C10)
- Dodecene-1 (C12)
- C14-C18
- C20+

GASES

- Gaseous Nitrogen
- Liquid Nitrogen
- Gaseous Oxygen
- Liquid Oxygen
- Liquid Argon
- Gaseous Hydrogen
- Liquid Carbon Dioxide
- Crude Krypton

OXYGENATES

- Methanol
- Methyl Tertiary Butyl Ether
- Methyl Tertiary Butyl Ether - TX

BUTYL GLYCOL ETHER (BGE)

- Butoxy Glycol Ether (EB)
- Butoxy Di Glycol Ether (DB)
- Butoxy Tri Glycol Ether (BTG)

ETHOXYLATES

- Polyethylene Glycol PEG 200
- Polyethylene Glycol PEG 300
- Polyethylene Glycol PEG 400
- Polyethylene Glycol PEG 400 Pharma
- Polyethylene Glycol PEG 600
- Polyethylene Glycol PEG 600 Pharma
- Natural Alcohol Ethoxylate L1
- Natural Alcohol Ethoxylate L2
- Natural Alcohol Ethoxylate L3
- Natural Alcohol Ethoxylate L7
- Natural Alcohol Ethoxylate L9
- Castor Oil Ethoxylate EL 30
- Castor Oil Ethoxylate EL 40
- Synthetic Alcohol Ethoxylate TA 5
- Synthetic Alcohol Ethoxylate TA 6
- Synthetic Alcohol Ethoxylate TA 7
- Synthetic Alcohol Ethoxylate TA 8
- Synthetic Alcohol Ethoxylate TA 9
- Synthetic Alcohol Ethoxylate TA 10
- Synthetic Alcohol Ethoxylate TA 3070
- Synthetic Alcohol Ethoxylate TA 4070

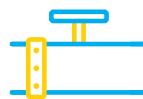
OLEFINS AT A GLANCE

SABIC is one of the largest producers of Ethylene around the globe with annual capacity of 15MMT



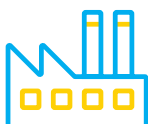
PRODUCT PORTFOLIO

Ethylene
Propylene
Butadiene
Alpha Olefins
Butene-1



CAPACITY

20 MMt/A



MANUFACTURING FOOTPRINT

KSA Jubail: PETROKEMYA, UNITED,
SAUDI KAYAN, SHARQ

KSA Yanbu: YANSAB, YANPET

Europe: GELEEN, TEESIDE

China: SSTPC

GLYCOLS AT A GLANCE

SABIC is recognized as a global leader in Glycols with a sizeable production and global reach.



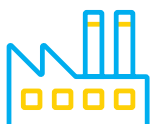
PRODUCT PORTFOLIO

MEG, DEG, TEG



CAPACITY

MEG 6.9 MMt/A
DEG & TEG 500 Kt/A



MANUFACTURING FOOTPRINT

KSA Jubail:
SHARQ, SAUDI KAYAN,
UNITED

KSA Yanbu:
YANSAB, YANPET

China: SSTPC

OXYGENATES AT A GLANCE

SABIC is recognized as a global leader in Methanol and MTBE with a sizeable production and global reach.



PRODUCT PORTFOLIO

MeOH
MTBE



CAPACITY

5.4 MMt/A
MeOH

3.2 MMt/A
MTBE



MANUFACTURING FOOTPRINT

MeOH:
KSA Jubail: ARRAZI, IBN SINA
Bahrain: GPIC

MTBE:
KSA Jubail:
IBN-ZAHR, IBN-SINA, PETROKEMMYA
KSA Yabbu: YANSAB
Europe: GELEEN
China: SSTPC

FUNCTIONAL CHEMICALS AND AROMATICS AT A GLANCE

SABIC is recognized as a global leader in Styrene with a sizeable production and global reach.



PRODUCT PORTFOLIO

Aromatics:

Styrene, Benzene, Phenol, Acetone, Cumene

Functional Chemicals:

Chlor Alkali, Oxo, MMA, Oleochemicals, Ethyleneamine, Ethanolamine



CAPACITY

Aromatics:

Styrene 1,421 Kt/a

Benzene 546 Kt/a

Phenol 428 Kt/a

Acetone 265 Kt/a

Cumene 226 Kt/a

Functional Chemicals:

Chlor Alkali 1,501 Kt/a

Oxo 316 Kt/a

MMA 250 Kt/a

Oleo 195 Kt/a

Ethanolamine 100 Kt/A



MANUFACTURING FOOTPRINT

Aromatics:

KSA: Jubail, Yanbu

USA: CosMar, Mount Vernon

EU: Geleen, Wilton

China: SSTPC

Functional Chemicals:

KSA: Jubail, Yanbu



PRODUCT APPLICATIONS

PRODUCT	MAIN APPLICATIONS
Linear Alpha Olefins	LLDPE
	HDPE
	Detergents
	Lubricants
	Oil Field Chemicals
Iso-butyraldehyde	Plasticizers
	Paints & Coatings
	Personal care
Diocetyl Phthalate	Perfume
	Cable & Wires
	PVC Pipes
	Hoses
N-Butanol	Roofing Materials
	Paints & Coatings
	Cosmetics
	Leather
	Perfumes
Ethanolamines	Industrial Cleaning Solutions
	Lubricants
	Surfactants & Detergents
	Agriculture
	Construction
	Metalworking
	Refineries
	Wood Preservatives
	Pharmaceuticals
	Personal Care & Cosmetics
Water treatment	
Ethyleneamine	Textile
	Oil Field
	Homecare
	Adhesives & sealants
	Asphalt additives
	Concrete admixture
	Epoxy resins for wind turbine blades
	EDA as Polyetheramines
Water treatment as Chelating agents	
Butoxy Glycol Ether (BGE)	Lubricants
	Oil field chemicals
	Active solvent for solvent-based coatings
	Coalescent for industrial water-based coatings
	Coupling agent for architectural water-borne coatings
	Coupling agent and solvent in household and industrial cleaners, rust removers, hard surface cleaners, and disinfectants
	Primary solvent in solvent-based silk screen printing inks
Coupling agent for resins and dyes in water-based printing inks	
Ethoxylates	Solvent for agricultural pesticides
	Personal Care & Cosmetics
	Surfactants & Detergents
	Textile
	Paints
	Pharmaceuticals
	Dyes
	Paints & Coatings
Agriculture	
P-xylene	Plastic Lubricants
	Leather
	Terephthalic Acid

PRODUCT	MAIN APPLICATIONS
Methyl Methacrylate	Acrylic Sheet
	Molding Compounds
	Paints & Coatings
	Impact Modifier
Glycols	Polyester resins
	Adhesives
	Paints & Coatings
	Textile
	Paper
	Leather
	Antifreeze
	Construction
	Lubricants
	Water treatment
	Brake fluids
Oil Field	
Industrial Gases Applications	Chemicals
	Refining & Energy
	Metallurgy
	Healthcare
	Glass
	Electronics
Methanol	Pulp & Paper
	Raw material for manufacturing of Formaldehyde, Acetic acid, Polyacetal, MTBE, Acetaldehyde, Ethanol, Acetic Anhydride, MMA, HCN, Methyl Formate, Methyl, Amines, Polymethyl Phenol, Dimethyl Ether, H ₂ gas, CO gas
MTBE	Fuel
	Gasoline blending
	Synthetic Rubbers
Acetone	Methyl Methacrylate
	Personal Care
	Textile
	Surface Coatings
Phenol	Films & Adhesives
	Pharmaceuticals
	Azo dyes
Ethylene Dichloride	Wood preservatives
	Plastics
Caustic Soda	PVC
	Detergents
	Water treatment
Olefins	Paints
	Chemicals processes
Styrene Monomer	Chemicals Manufacturing
	Polymer
Iso-butanol	Synthetic Rubbers
	Styrene homopolymers and copolymers
2-Ethylehexanol	Packaging materials and sheets
	Paints & Coatings
Iso-butanol	Personal care
	Perfume
2-Ethylehexanol	Plasticizers
	Adhesives

CONTACT US

Middle East and Africa

Global Headquarters

PO Box 5101
Riyadh 11422
Saudi Arabia
T +966 (011) 225 8000
F +966 (011) 225 9000
E info@sabic.com

Americas

2500 City West Boulevard
Suite 650, Houston
TX 77042
USA
T +1 713 532 4999
F +1 713 532 4994
E info@americas.sabic.com

Europe

PO Box 5151
6130 PD Sittard
The Netherlands
T +31 467 222 222
F +31 467 220 000
E info@sabic.com

Greater China

2550, Xiupu Road
Pudong Shanghai 201319, China
T +86 21 2037 8188
F +86 21 2037 8288
E stcl-sha@sabic.com.cn

Rest of Asia

One Temasek Avenue
06-01 Millenia Tower
Singapore 039192
T +65 655 725 55
F +65 653 181 01
E sappl@sabic.com