

nusaned

A SABIC INITIATIVE FOR 2030 VISION

سباک
انکالڈ





CONTENTS

INTRODUCTION	04
VISION AND MISSION	06
PILLARS AND ENABLEMENT PLATFORMS	08
EXECUTIVE COUNCIL	10
2020 BUSINESS STATISTICS	11
NUSANED SUPPORT	12
NUSANED ECOSYSTEM	14

SAUDI VISION 2030 REPRESENTS THE MOST SIGNIFICANT SHIFT IN THE KINGDOM'S ECONOMIC DEVELOPMENT POLICY IN DECADES. SABIC IS IDEALLY PLACED AND IS FULLY COMMITTED TO ENABLE THE INDUSTRIAL REALIZATION OF VISION 2030.

A dedicated unit, Local Content and Business Development Unit (LCBDU) was established in January 2017. LCBDU developed and launched the Nusaned initiative in January 2018 as a platform for industrial investment in alignment with national industrial strategy.



VISION

Help prepare the Saudi local industry for promising sectors of the future as part of the National Industry Strategy to enable Saudi Vision 2030, serving as SABIC's integrated engine to achieve the localization agenda.

MISSION

Sponsor competitive industrial ventures, and provide direct-indirect support through strategic partners to build necessary infrastructure for advancing the Saudi industrial sector, while acting as a catalyst for the Kingdom's priority projects.

STRATEGIC MISSIONS



Facilitate enhancement of localization levels for materials and services



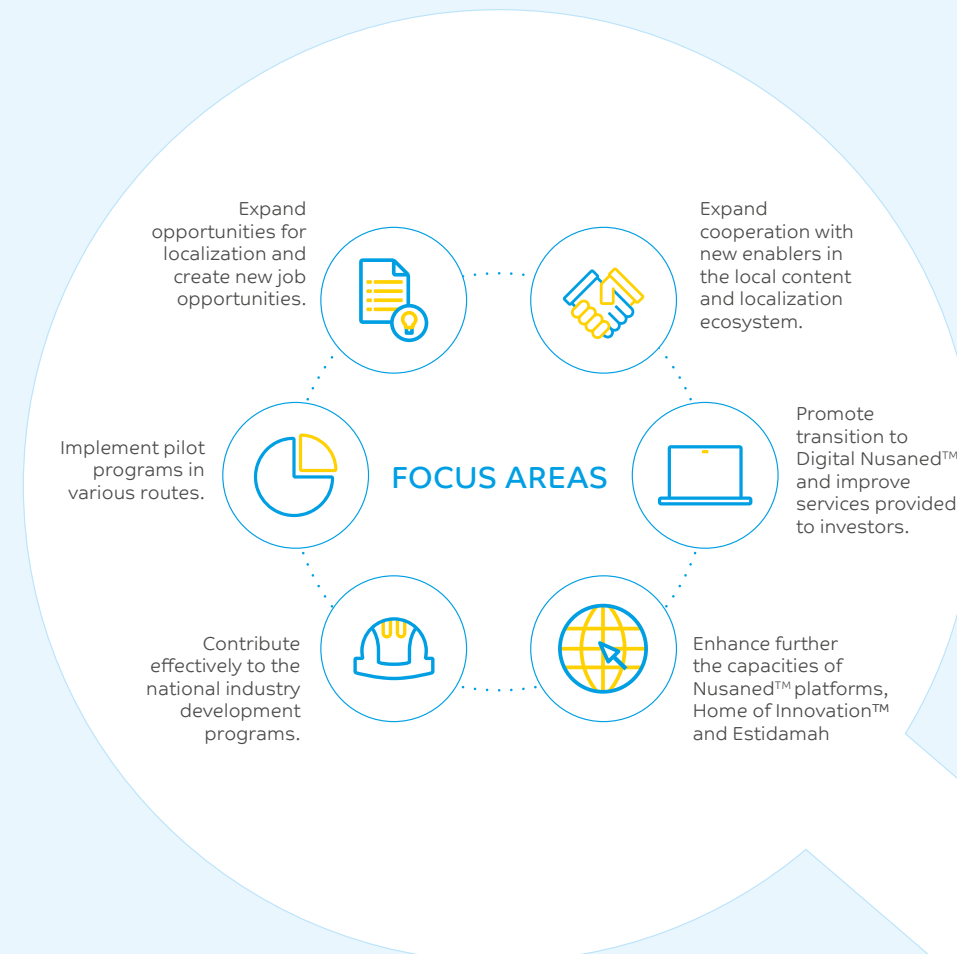
Promote private sector growth by creating promising opportunities and investments in transformative industries



Assist local human capital development by facilitating skills training and entrepreneurship development



Support foreign investment growth in the Kingdom



PILLARS AND ENABLEMENT PLATFORMS

Strategic Priority: Engagement of stakeholders via partnering or seeking endorsement with relevant KSA authorities/agencies.

CORE PILLARS

ENTEMA

Enable investors to explore investment opportunities and test their viability and attractiveness to receive SABIC support.



ACCESS TO FINANCE

Provide sources of direct and indirect financing for potential investment opportunities through Nusaned™ Investment, SABIC partners, and shareholding investment arms.



DAEM

Deliver on SABIC support packages proposed to registered investors (such as product offerings and technology and service supports) to enable investment opportunities.



MUAHAL

Develop workforce capabilities through development of technical and leadership capabilities among the local workforce and qualified human resource capital, to enable investor opportunities and support generation of jobs.



ENABLEMENT PLATFORMS



HOME OF INNOVATION

Innovation platform for attracting national and international industrial companies to create opportunities for localization of the technology industry and business growth.



NUSANED™ INVESTMENT

Strategic financial arm to enable qualitative investments.



ESTIDAMAH

Platform to support applied agricultural research.

EXECUTIVE COUNCIL

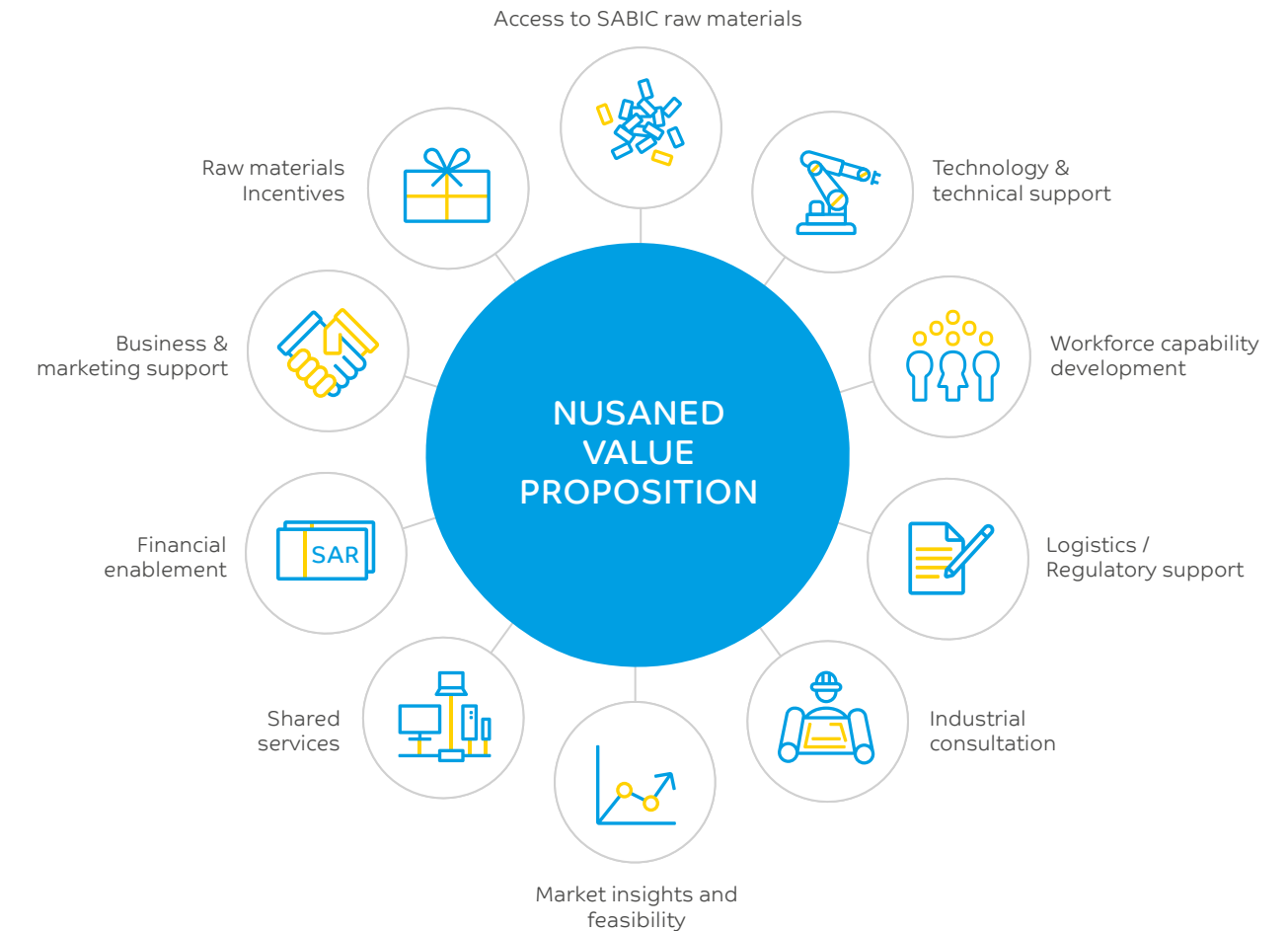
**YOUSSEF AL-BENYAN**Vice Chairman and
CEO, SABIC**DR. ABDULLAH
ABU THUNIN**Vice Minister, Human
Resources and Social
Development for
Labor**ENG. OSAMA
ALZAMIL**Vice Minister, Ministry
of Industry and
Mineral Resources**ENG. SALEH
ALRASHEED**Governor, Small and
Medium Enterprises
General Authority
(Monsha'at)**AJLAN AL
AJLAN**Chairman of the Board
Council of Saudi
Chambers
Joined the council
membership in 2021**ABDULRAHMAN
ALSMARI**CEO, Local Content
& Government
Procurement
Authority**ENG. MOHAMMED
ALWAKEEL**Deputy of Investment
Attraction &
Development, Ministry
of Investment
Council membership
ended 2020

2020 BUSINESS STATISTICS

**INVESTOR
DEVELOPMENT****144**
KSA Investors
(80%)**GDP IMPACT**Private Sector
USD
2,807^MSME:
USD
1,607^M**NEW LOCAL
PRODUCTS****435****CAPEX**USD
5,295^M**JOBS CREATED**
7,922**IMPORT
SUBSTITUTION
(KTPA)****>3,680****EXPORTS (KTPA)****>2,400****POTENTIAL RAW MATERIALS
PROVIDED (KTPA)****1,156**
TOTAL
RAW MATERIALSChemicals:
709Polymers:
291Specialties:
102Agri-Nutrients:
22Others:
18Metals:
14

WHAT KIND OF SUPPORT DO WE OFFER?

NUSANED LEVERAGES SABIC LOCAL
CONTENT VALUE PROPOSITION ACROSS
TEN KEY ELEMENTS.



NUSANED ECOSYSTEM

ENABLEMENT



Saudi Authority for
Industrial Cities and
Technology Zones



وزارة الاستثمار
Ministry of Investment



Royal Commission for
Jubail and Yanbu



King Abdullah
Economic City

FINANCE SUPPORT



بنك التنمية الاجتماعية
SOCIAL DEVELOPMENT BANK



كفالة
Kafalah



البنك الأهلي
National Commercial
Bank



ORIX
Saudi Orix Leasing
Company



المندوق
المالي
SIDF
Saudi Industrial
Development Fund

HUMAN CAPITAL DEVELOPMENT



القوى الإنسانية
Forces of Humanity

- Program on development and application of Global mindset
- Self-Leadership Program

ENTREPRENEUR TRAINING AND EMPOWERMENT



King Fahad University of
Petroleum & Minerals,
Dhahran



Riyadh Chamber



Asharqia Chamber,
Damman



Abha
Chamber

TECHNICAL DIPLOMA IN VARIOUS DISCIPLINES



Higher Institute for
Plastics Fabrication,
Riyadh



Jubail Technical
Institute, Jubail



Jubail Industrial College,
Dhahran



Higher Institute of
Paper and Industrial
Technologies, Jeddah



High Institute for
Elastomer industries,
Yanbu



Saudi Electric Services
Polytechnic, Riyadh



HOW TO REGISTER?

1

Go to
lc.sabic.com

2

Click on register through
Entema and register as
new investor

3

Fill required
application form

4

Account manager will be
assigned from
Nusaned team



WE REMAIN STEADFAST IN FACILITATING
LOCALIZATION OF BUSINESS OPPORTUNITIES,
ATTRACT FOREIGN INVESTMENTS, AND
DIVERSIFY THE KINGDOM'S ECONOMY, WHILE
REDUCING DEPENDENCY ON OIL.

Contact Us:

SABIC Head Office

P.O. Box 5101

Riyadh 11422

Saudi Arabia

Twitter: @nusaned

Contact: 800-124-2030

Email: LocalContent@sabic.com

Website: LC.sabic.com



All rights reserved SABIC © 2021

www.SABIC.com